



Butte College Professional Development Flex Workshops and Staff Activities January 12 – 20, 2012

Pre-Flex Activities Begin: January 9
Spring Flex Days: January 12, 13, 17, 19, 20
Spring Semester Institute Day: Wednesday, January 18.
Spring Semester Begins: January 23, 2012

Revised: 1-9-12

Workshops Begin in Early January

Professional Development welcomes you back for the Spring 2012 semester. This Flex booklet provides information regarding the January workshops, upcoming semester events and information about various professional development programs. We encourage you to explore the numerous offerings and take advantage of this opportunity.

- The official calendar start of Faculty Flex Week is **Thursday, January 12**. The activities shown in this booklet are opportunities for Flex credit, with the exception of Institute Day Activities which is required for full-time faculty.
- Activities presented during the five Flex days, January 12-20, provide opportunities for full-time and associate faculty to gather Flex credit hours to fulfill their Flex obligation. All college employees are invited to attend and participate.

The Professional Development Program is located in the Center for Excellence (Library 210). The Program’s assistant, Magian Smith, can be reached at (530) 895-2854. Carol Stanley-Hall, Physical Education faculty member, is serving as Faculty Professional Development Coordinator. Ruth Ann Hansen is the Classified Professional Development Coordinator and Jack Lemley the Management/Supervisory/Confidential (MSC) Coordinator. David Danielson provides the administrative leadership.

Year-round Activities

Year-round activities provide professional development and personal growth opportunities for Butte College employees. Although some workshops are designed for specific audiences, most workshops are open to all college employees.

Appreciating Expertise, Creativity & Effort

Many members of the Butte College community will make presentations this January. Their expertise, creativity, and effort are rewarded by your participation in their workshops. Please plan to attend and to earn your Flex hours. By participating in the January Flex Days, you say “thank you” to our volunteers. Their continued willingness to share with us is vital for the continuation of Professional Development.

Professional Development Forms & Applications available at our website:

Butte College Home page
Departments/Programs/Services
Professional Development

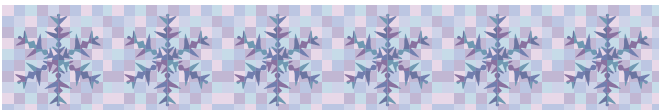
Also accessible from MyBC
Groups and Committees
Professional Development – Faculty

The goal of the website is to be sustainable in our effort to provide information and share opportunities.

Updates and revisions to the January workshops will be reflected in **RED** in the January 2012 Flex Booklet posted on the sites above.

Butte College Core Values

Students First
Excellence
Respect
Diversity in Community
Communication
Accountability
Sustainability



Computer & Technology Related

Blackboard Community Exchange..... 5
 Everything you wanted to know about Blackboard.... 11
 Global Positioning System (GPS) 4
 Microsoft Office Round Table 11

Faculty Related (Miscellaneous)

ASK ME Project..... 5
 Book in Common: *Zeitoun* 9
 Brain Science in the Classroom..... 11
 Coffee's On Us..... 5
 Chris Martenson's Crash Course: Essential Knowledge
 for Uncertain Times..... 7
 Degenerate Art 6
 Discover Your Strengths using Gallup's
 StrengthsFinder 3,4
 Effective Classroom Management: Creating a
 Climate for Learning. 8
 Faculty/Staff Rights & Student Due Process..... 6
 Female Body Modification Practices 6
 Galileo's Battle for the Heavens..... 10
 Haiti..... 11
 Instructional Skills Workshop (ISW) 3
 Learning Styles: Implications for Educators 6
 On-Course (.5):..... 3
 On-Course (Flex): Burning Bright to Burning Out 3
 On-Course (Flex): Educate and Enlighten! 4
 Visit a Sustainable Home 5

Institute Day

Opening Activities 9
Dinner – AHPS, LRC, ARTS 9
Institute Day Activities/President's Address 9

Meetings, Orientations, Retreats & Training

Academic Senate Forum 10
 All Faculty Meeting..... 9
 Associate Faculty Tours 9
 BCEA Luncheon 10
 Chairs & Coordinator Meeting 6
 Club Advisor's Meeting & Luncheon 6
 Department Meetings 9
 Diversity Committee 10
 Employee Orientation..... 3
 Faculty Department Meetings 5
 Faculty Networking & Social Opportunity 10
 How to Work with International Students in and
 out of the Classroom 9
 New Associate Faculty Orientation..... 9
 Part-time Faculty Association Meeting 9
 Pizza Lunch \$3.00 4
 Pro Dev Hosted Wrap-up Luncheon 11
 The Road to 508 Compliance 7
 Safe Zone Training – Are You a LGBTQ Ally? 4
 STRS/Retirement Information..... 8


Safety / Health & Wellness / Financial

Chemical Hygiene Basics 8
 Current Health Issues 11
 Hazmat Spill Response Training 3
 Progressive Pilates 10

Faculty Flex Calendar Basics.....12 - 14

Campus Location Key

AS/ICC	Assoc Students, 1 st Floor Campus Ctr.
AHPS	Allied Health Public Services
ARTS	Arts Building
CAS	Center for Academic Success
CFE	Center for Excellence (LB 210)
CHC	Chico Center
GYM	Gymnasium
LB	Library
LRC	Learning Resource Center
MC	Media Center
SSA	Swing Space A
TTC	Technology Training Center (LB 216) in the Center for Excellence.



Butte-Glenn Community College District
Mission Statement

Butte College provides quality education, services, and workforce training to students who aspire to become productive members of a diverse, sustainable, and global society. We prepare our students for life-long learning through the mastery of basic skills, the achievement of degrees and certificates, and the pursuit of career and transfer pathways.

MSC Professional Development Activities

Knowledge sharing, job skills enhancement,
community building.

*Participatory Governance...Planning, Budgeting and
Assessment...Risk Management...Latest Technology
Trends...and more!*

Presented at the monthly Managers Meetings
as well as other events/locations



Pre - Flex Activities **Monday, January 9**

Instructional Skills Workshop (ISW)

650 Jan 9 – 12, 24 hours

8am – 4pm Learning Resource Center (LRC)

Pre-Registration Required. Contact vogelsh@butte.edu

Offered also in May/June:

650.1 May 29th – June 1st, 24 hours. Location: LRC

Pre-Registration Required. Contact vogelsh@butte.edu

The ISW program is an intensive 4-day workshop conducted by faculty facilitators for faculty participants.

The ISW program includes the following:

- Focus is on a laboratory approach to the improvement of teaching and learning.
- During the workshop each participant prepares and conducts three 10-minute “mini-lessons.”
- Participants receive written, oral and video feedback from the other participants on the effectiveness of the mini-lesson.
- The “mini-lessons” are informative, unusual, fun and very interactive.

Strategic Initiatives:

1. *Inspiring Passion through Collaboration*
2. *Focusing on Student Success*
3. *Valuing a Culture of Learning*

Flex – Day 1 **Thursday, January 12**

Employee Orientation – Flex # 24

8am – 3pm, Center for Excellence

The new full-time faculty hired in fall 2011 will be joining other Butte College employees for a Employee Orientation – Part I.

Strategic Initiatives:

1. *Inspiring Passion through Collaboration*
4. *Enhancing an Innovative, Flexible, Responsive and Accountable Culture*

Classified Professional Development Activities Week

Coming to a classroom near you!
March 19th through March 23rd 2012
Spring workshops for Classified Employees
Watch District Announcements in January for topics, dates, times and locations!

On Course (.5) – Flex # 150

8:30am – 4pm, MC-243 **LB 105**

Carrie Roberson

Those interested in receiving the .5 unit offered for the On Course activity must attend from 8:30 – 4:00 p.m. The morning and afternoon workshops are available independently for flex as well.

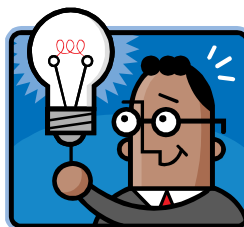
On Course (Flex):

Burning Bright to Burning Out – Flex # 150.1

9am – 12pm, MC-243 **LB 105**

Carrie Roberson

Both students and educators experience stress and burnout which affects our ability to function and meet goals. This workshop will focus on emotionally intelligent stress management after exploring symptoms, prevention and mindfulness in both our personal and professional lives.



Discover Your Strengths using Gallup's StrengthsFinder – Flex # 376

9:30am – 11:30am, LB 206

Jo Anne Cripe

What are you truly GREAT at? How can you live into these strengths? Come engage in an interactive workshop that uses the Clifton StrengthsFinder to empower participants to identify their top 5 strengths. This tool - developed and validated by Gallup - is a powerful "positive psychology" approach to understanding and living into one's significant strengths. Demonstrated to be especially confirming and empowering for community college students, the "StrengthsQuest" approach is becoming a cornerstone for Butte College student success classes.

RSVP to Magian Smith at smithma@butte.edu.

Limited to 20 people.

Strategic Initiatives:

1. *Inspiring Passion through Collaboration*
2. *Focusing on Student Success*
3. *Valuing a Culture of Learning*

Hazmat Spill Response Training – Flex # 329

11am – 12pm, SSG-102

Phil Clark, Keenan & Associates.

This training is for staff and supervisors in Transportation, Auto Shop, Agriculture and Farm Services, and for anyone who is interested in attending. Training will outline the steps staff need to take in the event of an above ground storage tank leak and gasoline, waste oil, diesel and transmission fluid.



Items covered will be spilled product identification, risk assessment, protective clothing, containment, clean up, reporting to authorities, disposal of materials. It will also review the Hazardous Materials Release Response Plan. Phil Clark with Keenan and Associates will be providing the training.

Pizza Lunch \$3.00 – Flex # 750

12pm – 1pm, CFE Library 1st floor

Take a break from the workshops and join your colleagues for lunch in the Center for Excellence. \$3.00 to include pizza, salad and a drink.

Discover Your Strengths using Gallup's StrengthsFinder – Flex # 377

1pm – 3pm, LB 206

Jo Anne Cripe

What are you truly GREAT at? How can you live into these strengths? Come engage in an interactive workshop that uses the Clifton StrengthsFinder to empower participants to identify their top 5 strengths. This tool - developed and validated by Gallup - is a powerful "positive psychology" approach to understanding and living into one's significant strengths. Demonstrated to be especially confirming and empowering for community college students, the "StrengthsQuest" approach is becoming a cornerstone for Butte College student success classes.

RSVP to Magian Smith at smithma@butte.edu.

Limited to 20 people.

Strategic Initiatives:

1. Inspiring Passion through Collaboration
2. Focusing on Student Success
3. Valuing a Culture of Learning

Global Positioning System (GPS) – Flex # 151

1pm – 3pm, MC 244

Michael Panunto

Learn about the development of the Global Positioning System, how it works, and its various applications. Solve some simple geometric problems and then go outside and use the GPS to orient and navigate around campus. No prior experience necessary and all materials will be provided.

Refreshment will be provided for all workshops on the 2nd floor of the Media Center. Enjoy!

On Course (Flex):

Educate and Enlighten! – Flex # 150.2

1pm – 4pm, MC 243 LB 105

Carrie Roberson

When learning is boring and uninspired, education fails- and when learning becomes an active experience, education is enlightened! Elevate your lectures to an energetic, focused and contemporary style while fueling student exploration, regardless of the subject matter.

Safe Zoning Training. Are you an LGBTQ Ally?

Flex # 378

1pm – 5pm MC 253

Aydin Kennedy

A faculty or staff ally is someone who is supportive of and educated about issues that affect lesbian, gay, bisexual, transgender, and queer or questioning students in the classroom. This Safe Zone training, modeled on the national Safe Zone program in schools, is meant to identify a network of concerned, empathetic, and knowledgeable LGBTQ allies at Butte College. Upon completion of the training, participants will be asked to post a Safe Zone placard in their office. (We have solutions for adjuncts with no permanent office, too!) Because we believe true allies must also have some training on LGBTQ issues, it isn't possible to get the placard without attending the training. Please join us!

Strategic Initiatives:

1. Inspiring Passion through Collaboration
2. Focusing on Student Success
3. Valuing a Culture of Learning

Associate Faculty – Mark Your Calendars!

2nd Annual

755 – “New Frontiers”

An Associate Faculty Conference

Saturday, March 31, 2012

8:30am – 3:30pm

Main Campus

- Free conference registration
- Associate Faculty focused workshops
- 7 Hours of Flex
- \$50 Stipend (must attend all day)
- Networking!!
- Stay tuned for more information!
- Contact hallst@butte.edu



Flex Day 2 **Friday, January 13**

Butte College's 4th Annual Blackboard Community Exchange – Flex # 275 **8:30am – 3pm, 1st Floor of the LRC**

Dave Stephens, Chris Palmarini and David Danielson. Whether you use Blackboard for your online or face-to-face classes, you care intensely about how students can learn best from your online resources. Yet your opportunities to discuss with other instructors are sometimes few and far between. This is your chance! No outside experts, no vendor-driven sales pitches: just your Butte colleagues listening and learning from each other. This one-day homegrown conference features twelve break-out sessions you can choose from plus a tasty lunch and a preview of our upcoming move to Blackboard 9.1.

- Any questions, contact Jane Alt 879-4077.
- *Please plan to join us! RSVP today at:*
www.butte-tmi.net/invite

Strategic Initiatives:

1. *Inspiring Passion through Collaboration*
2. *Focusing on Student Success*
3. *Valuing a Culture of Learning*
4. *Enhancing an Innovative, Flexible, Responsive and Accountable Culture*
5. *Modeling Sustainability*

Visit a Sustainable Home – Flex # 155 **3pm – 5pm,**

Tip Wilmarth

Meet at the Center for Excellence at 2:45pm to carpool over to Tip's home for a tour of his "off the grid" sustainable home.

Please RSVP to Magian Smith at smithma@butte.edu.

Limited to the first 25 people.

Strategic Initiatives:

3. *Valuing a Culture of Learning*
5. *Modeling Sustainability*



Monday, January 16

Martin Luther King Holiday
Butte College is closed



Flex Day 3 **Tuesday, January 17**

Coffee's On Us – Flex # 751 **7:30am – 8:30am Center for Excellence**

Carol Stanley-Hall, Jack Lemley, Ruth Ann Hansen, David Danielson and Magian Smith.

Start the semester off right! Drop by the Center for Excellence (CFE) for coffee and conversation.

Strategic Initiative:

1. *Inspiring Passion through Collaboration*



Faculty Department Meetings – Flex # 952 **8:30am – 10:50am**

Chairs and coordinators will announce locations.

Strategic Initiatives:

1. *Inspiring Passion through Collaboration*
2. *Focusing on Student Success*

ASK ME Project - Flex #1452

Monday, January 23 & Tuesday, January 24

Ruth Ann Hansen

Help students find their way around campus during the first couple days of class. Sign up to work a one-hour shift at one of the three information stations:

- Business Education building
- Bus Stop
- Learning Resource Center

Earn flex credit and be entered to win one of two \$25 gift cards to Food Services for volunteering!

Contact Ruth Ann at 895-2334; hansenru@butte.edu



Club Advisor's Meeting and Luncheon – Flex # 226
 11am – 12:20pm

A.S. Culture & Community Center in SSF

Kelly Munson and Yvette Zuniga

Join advisors from all the clubs to network and get important club updates. This meeting is strongly recommended for all club advisors.

Strategic Initiative:
 2. Focusing on Student Success

Female Body Modification Practices – Flex # 160
 11am – 12:20pm MC 243

Jeanne Thatcher

Content: An examination of female body modification practices worldwide, including historical perspectives, methods, health and psychological impacts, social pressure, female participation. From female circumcision to cosmetic surgery and starving to be thin, many of these practices can have devastating consequences. The constant efforts and preoccupation of millions of women, worldwide, to conform to body altering techniques and practices become obsessions, the worst consequences of which effect a nation's children.

Questions will be asked regarding why women, particularly, subject themselves to such practices and why cultures demand such sacrifices. Further questions include - What is wrong with women's bodies in the first place that require them to change their bodies in order to be accepted in society, and what can be done about the problem?

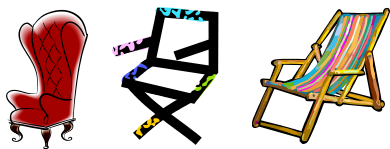
Strategic Initiatives:
 3. Valuing a Culture of Learning

Chairs & Coordinators Meeting – Flex # 24
 12:30pm – 1:50pm LB 105

Stacey Bartlett

Opportunity to share information and prepare for the upcoming semester.

Strategic Initiative:
 1. Inspiring Passion through Collaboration
 2. Focusing on Student Success



Refreshment will be provided for all workshops on the 2nd floor of the Media Center. Enjoy!

Faculty/Staff Rights & Student Due Process – Flex # 227
 12:30pm – 1:50pm MC 244

Al Renville

Student discipline problems are on the increase, and the number of student appeals and complaints have gone up dramatically. What you don't know about your rights and student due process can cause both you and the student unnecessary problems. Topics of discussion will include:

- What constitutes disruption?
- Can you suspend a student?
- How do you report an incident?
- What records do you need to keep?
- What key elements should be in your syllabus?

Strategic Initiative:
 2. Focusing on Student Success

“Degenerate Art” – Flex # 161
 12:30pm – 1:50pm ARTS 234

Alex O'Neil

This workshop revolves around showing a film called “Degenerate Art” which examines the historical context of the Nazi attack on Modern culture through their infamous exhibition Entartete Kunst (Degenerate Art).

I will give an introduction to the film and then play the film which is 60 minutes.

Strategic Initiatives:
 1. Inspiring Passion through Collaboration
 3. Valuing a Culture of Learning

Learning Styles: Implications for Educators
 Flex # 162

12:30pm – 1:50pm MC 247

Jason S. Reisinger

This workshop will allow you to examine Learning Style Theory and its implications for educators and teaching style! You'll determine your own Learning Style and examine how Learning Style Theory impacts teaching methodology.

Strategic Initiatives:
 1. Inspiring Passion through Collaboration
 2. Focusing on Student Success
 3. Valuing a Culture of Learning

Butte College's 6th Annual Sustainability Conference

March 1 – 3, 2012

Watch for more details!

Butte College is the national leader in sustainability in Community Colleges www.butte.edu/sustainability



The Road to 508 Compliance: Making Technology Accessible for All Students – Flex # 228

12:30pm – 4:30pm CFE

Gaier Dietrich – California Community College Chancellor's Office High Tech Center Training Unit.

12:30pm – 1:30pm

Hosted lunch for those attending. (CFE)

1:30pm – 4:30pm: Workshop

Did you know that all of Butte's electronic and Information Technology must be accessible to people with disabilities? This is by Act of Congress, and our federal funds could be at risk if we're not in compliance.

Please join Gaier Dietrich of the California Community College Chancellor's Office High Tech Center Training Unit to acquire the knowledge and tools you need to make electronic and information technology accessible to students.

Butte College is fortunate to have Gaier Dietrich on campus the entire day. A morning session is being provided for managers and classified staff.

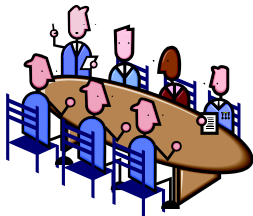
- Faculty are invited at 12:30pm for a hosted lunch and a faculty workshop from 1:30pm – 4:30pm.
- Contact Jaime Dillard for any questions or additional information @ dillardja@butte.edu.
- *Faculty: RSVP to smithma@butte.edu by 1/13/12.*

Strategic Initiatives:

1. *Inspiring Passion through Collaboration*
2. *Focusing on Student Success*
3. *Valuing a Culture of Learning*
4. *Enhancing an Innovative, Flexible, Responsive, and Accountable Culture*

Faculty Flex Committee:

Shirleigh Brannon
Steve Hall
April Hennessy
Ric Machuga
Carrie Roberson
Brenda Stagner
Christine Trolinger
Shaaron Vogel
Carol Stanley-Hall (Chair)



Thank you to the above individuals for all their efforts in developing the January Flex Workshops

Chris Martenson's Crash Course: Essential Knowledge for Uncertain Times

Flex # 163

2pm – 3:20pm MC 248

Robin Huffman

This live, abbreviated version of the popular and influential Crash Course video lecture presents the eye-opening and groundbreaking research of the longer work in a dynamic new format. The Crash Course explores the predicament of our economic and energy resources of our planet.

This course gives viewers the knowledge needed to make informed decisions about our future. The Crash Course provides an unflinching but uplifting look at the issues that define our moment in history, and the opportunities we have to reshape our world based on a new vision of prosperity.

Strategic Initiatives:

1. *Inspiring Passion through Collaboration*
2. *Focusing on Student Success*
3. *Valuing a Culture of Learning*
5. *Modeling Sustainability*

**Butte College
DIVERSITY DAYS
April 2 – 6, 2012**

Going strong in its fourth installment, **Diversity Days** is a week-long event that promotes diversity issues on the Butte College campus. The event is a collaboration of faculty, staff, clubs and students on campus, culminating in interactive workshops, keynote speakers, diversity displays, international music and dance performances and/or classes and stereotype breaking t-shirts. Look for those bright golden-rod shirts that say, "I am (blank), but I am not (blank)" during the first week in April. Please sign up to have classes attend events. Contact Diversity Committee Chair, Shahroukh Mistry, or Diversity Days Chair, Laura Rapozo-Davis if you have any questions.



Effective Classroom Management: Creating a Climate for Learning – Flex # 164

2pm – 3:20pm MC 247

April Hennessy and Kathleen Turner.

Have you ever had a student hijack your lesson plan? Does handheld technology ever interfere with learning in your classroom? How can you involve students in establishing behavioral expectations? This collaborative workshop addresses an instructional skill set essential for student success, one that is rarely addressed in graduate school. Participants will learn strategies for creating a positive and productive classroom environment.

Strategic Initiatives:

1. *Inspiring Passion through Collaboration*
2. *Focusing on Student Success*
3. *Valuing a Culture of Learning*

STRS/Retirement Information – Flex # 327

2pm – 3:30pm, MC 243

Howard Ferguson, STRS Counselor

Learn the fundamentals of retirement at this workshop.

*Individual STRS appointments are also available:

Tues. Jan. 17th, 9am – 1pm (SAS 347)

Wed. Jan. 18th, 9am – 1pm (SAS 347)

Thurs. Jan. 19th, 2pm – 5pm (SAS 347)

Fri. Jan. 20th, 9am – 12pm (SAS 347)

*Contact Rosemarie Newcomb at 530-225-0203 for an individual appointment. Call soon, appointments go quickly.

Strategic Initiative:

3. *Valuing a Culture of Learning*

Chemical Hygiene Basics: An Introduction to Safety Regulations and Safe Chemical Handling Practices in the Educational Laboratory – Flex # 328

6pm – 9pm PS 131

Tony Wren



This introductory course is required for all who use chemicals in instructional laboratory settings (science instructors and support personnel). If you have not attended a Butte College Chemical Hygiene Basics course before, and work in an instructional laboratory, this class is for you.

Professional Development Fall 2011 Survey Highlights

Thank you to all who participated in the recent Professional Development Survey. The survey results are in and being analyzed. This information has already been helpful to the Professional Development Leadership Team in providing program direction and budget allocations. A brief overview is below.

Respondents:

Full-time Faculty – 79

Associate Faculty – 76

Classified Staff – 50

Managers/Supervisor/Confidential (M/S/C) - 37

Number of respondents that agreed or strongly agreed Professional Development provided adequate opportunities for professional growth.

Full-time Faculty – 86%

Associate Faculty – 94%

Classified Staff – 79%

M/S/C – 67%

Number of respondents that agreed or strongly agreed they actively participate in professional development opportunities.

Full-time Faculty – 93%

Associate Faculty – 87%

Classified Staff – 71%

M/S/C – 70%

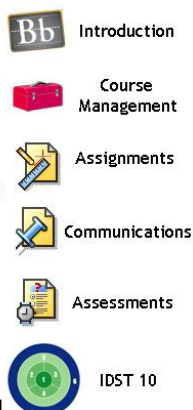
Thank you again for your participation. For more information regarding the survey data, please feel free to contact: Carol Stanley-Hall – Faculty; Ruth Ann Hansen – Classified Staff; Jack Lemley – M/S/C

tmi Technology Mediated INSTRUCTION

The Blackboard Learning Institute (BLI) is a training program for all faculty who are interested in using online tools to enhance and deliver instruction. Professional staff provide faculty training in Blackboard 8, including course design and development, and best practices in using online tools for learning.

For more information, and to view the Winter Session or Spring schedule and sign-up, please visit TMI online:

<http://www.butte.edu/tmi/BLI>



Wednesday, January 18

Book in Common – Flex # 165

12pm – 1:30pm MC 243

Suzanne Gripenstraw

Please join us for a discussion of the 2011-2012 Book in Common. This year's 2011-12 Book-in-Common is 'Zeitoun' by Dave Eggers. The book is a true story about Syrian born Abdulrahman Zeitoun and his family, and his fight to survive during and following hurricane Katrina – complete with issues of race and religion, bureaucratic injustice, and a desire to make a difference.



How to Work with International Students in and out of the Classroom – Flex # 235

12:30pm – 1:30pm MC 247

Tom Grothe, Patrick Christiansen, Rachel Sicke, Peggy Jennings-Severe

This workshop will offer insight and suggestions for working with international students in and out of the classroom setting. Workshop presenters have a vast amount of experience in serving this very special, unique and varied group of students.

Institute Day 2pm – 8pm

- Full-time Faculty are required to attend Institute Day 2pm to 8pm.
- Associate Faculty are invited and encouraged to attend the President's Address at 2pm in ARTS 160.
- Additional Associate Faculty workshops are available this day.

Strategic Initiatives:

3. Valuing a Culture of Learning

President's Address & Vice President's Updates

Flex # 12

2pm – 3pm ARTS 160

Institute Breakouts 3:15pm – 4:45pm

ARTS building

5pm – 5:45pm

#30 – All Faculty Meeting – Campus Center

5:50 – 6:25pm

Dinner in ARTS, LRC, AHPS

6:30 – 8pm

954 – Department Meetings

Locations for department meetings will be provided at the All Faculty Meeting.

Associate Faculty Workshops on Institute Day

Take a Tour and Identify Campus Resources for Students and Faculty – Flex # 380

9am – 10:50am, CFE

Wendy Brown

Butte College has amazing resources to help both you and your students. Learn what and who is where. You'll learn where to get a free TB test; where a student can get a tutor; how to put books on reserve; and where to acquire book loans, résumé training and transfer information. Join Wendy Brown for a campus tour to address your questions-and those your students are likely to have!

Strategic Initiative:

3. Valuing a Culture of Learning

Associate Faculty Orientation

Flex # 8 11am – 1:30pm MC 244

Penny Lillie & Gail Peters

This session is developed primarily for new associate faculty. Don't miss a wonderful opportunity to gain critical information that can decrease new instructor stress! Your faculty colleagues will answer questions about your first semester at Butte College and provide information about record keeping, rosters, grades, and so on.

Strategic Initiatives:

1. Inspiring Passion through Collaboration

2. Focusing on Student Success

3. Valuing a Culture of Learning

Part-time Faculty Association Meeting

Flex # 18 3:15pm – 4:50pm CFE

Stacey Burks – PFA President

Join Associate Faculty Association President Stacey Burks and get an update on all the PFA issues as well as the work being done through the Senate, the Participatory Governance Committee and Professional Development.

Strategic Initiative:

1. Inspiring Passion through Collaboration

3. Valuing a Culture of Learning

The All Faculty Meeting will begin promptly at 5pm in the Campus Center. Dinner and Department meetings to follow.



Flex Day 4 Thursday, January 19

Academic Senate Forum – Flex # 950

9:30am – 12pm AHPS 118

Kenneth Bearden, Academic Senate President
The Senate will keep you informed about critical academic and professional issues. Emeritus Faculty will be honored. Plan to attend!

Strategic Initiatives:

1. Inspiring Passion through Collaboration
2. Focusing on Student Success
3. Valuing a Culture of Learning



BCEA Luncheon – Flex # 951

Full-time Faculty Union

12pm – 2pm AHPS 118

Mario Vela – BCEA President

All full time faculty encouraged to attend and enjoy lunch. Guest speaker Jonathan Lightman from FACCC will be in attendance to speak to us on the pension reform movement, the latest on the budget and legislation. The last half hour from 1:30pm to 2:00pm we will discuss the negotiations and latest on local union items.

Strategic Initiative:

1. Inspiring Passion through Collaboration

Diversity Committee

Flex # 651

2pm – 3pm AHPS 118

Shahroukh Mistry

All welcome to join the Diversity Committee meeting and hear an overview of their work on campus and the upcoming Diversity Days!

Strategic Initiatives:

1. Inspiring Passion through Collaboration
2. Focusing on Student Success
3. Valuing a Culture of Learning

Faculty Networking and Social Opportunity

2:30pm – 5pm Home of Carol Stanley-Hall

Flex # 760 1 hour of flex credit.

Carol Stanley-Hall

You are invited to join your colleagues at the home of Carol Stanley-Hall for refreshments and conversation. All invited to take these few minutes out of your busy day. Directions available at Wednesday night department meetings or from Magian in the CFE.

Strategic Initiatives:

1. Inspiring Passion through Collaboration

Remember Professional Development Forms & Applications are available on the Pro Dev website: <http://www.butte.edu/prodev/>

Flex Day 5 Friday, January 20

Galileo's Battle for the Heavens

Flex # 166

9am – 12pm MC 243

Michael Panunto

Galileo occupies a special place in the history of science; he is generally considered the father of modern scientific investigation and analysis. His conflict with the Church – often misunderstood – is usually considered the opening salvo in the “battle” between scientific reasoning and superstition. However, very few people today realize what it was that Galileo discovered and the specific reasons for why the Church prosecuted him. In this workshop, we will first view the NOVA production of “Galileo’s Battle for the Heavens”, an excellent introduction to Galileo, his discoveries, and his times. We will then discuss how Galileo’s conflict applies to scientific “controversies” in our own time.



Strategic Initiatives:

1. Inspiring Passion through Collaboration
2. Focusing on Student Success
3. Valuing a Culture of Learning
4. Enhancing an Innovative, Flexible, Responsive, and Accountable Culture
5. Modeling Sustainability

Progressive Pilates – Flex # 550

9am – 10:20am GYM 113

Dtim Chiraporn

An invitation to an hour and 20 minutes of Progressive Pilates workout utilizing mat and small tools such as stability balls, foam rollers, hand weights and resistance bands to energize, revive, stretch and strengthening your body muscles and mind - a unique opportunity not to be missed to discover the power within you!

Strategic Initiatives:

3. Valuing a Culture of Learning

“Succeeding Together – 2012”

Professional Development has aligned January Flex Workshop offerings with the five strategic initiatives.

1. Inspiring Passion through Collaboration
2. Focusing on Student Success
3. Valuing a Culture of Learning
4. Enhancing an Innovative, Flexible, Responsive, and Accountable Culture
5. Modeling Sustainability



Haiti – Flex # 1679:30am – 10:50am MC 244

Belinda Schafer

Discuss the socio-political history of Haiti.

Discuss the religious beliefs of Haiti.

Discuss how the historical events affected the aftermath of the 2010 earthquake.

Discuss the world response to the disaster – what has worked and what has not worked.

Discuss medical conditions and diseases that occurred before the earthquake and that have worsened since.

Discuss my personal experience at the only point of medical care in Cite Soleil, Haiti.

Strategic Initiatives:

1. *Inspiring Passion through Collaboration*
2. *Focusing on Student Success*
3. *Valuing a Culture of Learning*

Microsoft Office Round Table

Flex # 450

9:30am – 10:50am TTC/CFE/LB 216

Kasey Crosby

Have a question about Microsoft Word, Excel, PowerPoint, or Outlook, but don't know who to ask? Come to the Microsoft Office Round Table and bring those questions with you! We'll be hosting an open forum and let You run the show. What's new in 2012, how do I insert a table in Word, how do I create an equation in Excel, how do I insert sound in PowerPoint? The possibilities are endless!

Strategic Initiatives:

3. *Valuing a Culture of Learning*

Everything You Wanted to Know About Blackboard, but were Afraid to Ask!

Flex # 451

11am – 12:20pm TTC/CFE/LB 216

Dave Stephens and Chris Palmarini

Join TMI staff in this follow up to the Bb Community Exchange, where questions about Bb will be answered. No question too big or too small! An emphasis will also be given to showing specific features of Bb that will address time management and student success initiatives. All faculty and staff are welcome!

Strategic Initiatives:

1. *Inspiring Passion through Collaboration*
2. *Focusing on Student Success*
3. *Valuing a Culture of Learning*
4. *Enhancing an Innovative, Flexible, Responsive, and Accountable Culture*
5. *Modeling Sustainability*



Refreshment will be provided for all workshops on the 2nd floor of the Media Center. Enjoy!

Current Health Issues

Flex # 551

11am – 12:20pm MC 247

Camilla Bantum

This workshop will cover several of the current health issues that we and our students are faced with. Topics such as the latest nutrition and exercise recommendations, the link between stress and disease, and the mind-body connection will be discussed as well as current medical ethics issues such as the implications of genetic testing for disease.

*Strategic Initiatives:*

1. *Inspiring Passion through Collaboration*
2. *Focusing on Student Success*
3. *Valuing a Culture of Learning*
4. *Enhancing an Innovative, Flexible, Responsive, and Accountable Culture*
5. *Modeling Sustainability*

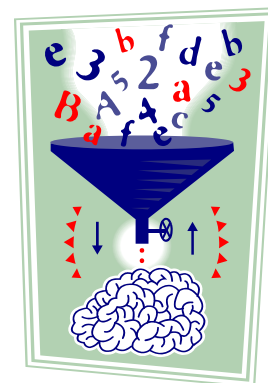
Brain Science in the Classroom – Flex # 16811am – 12:20pm MC 248

Molly Emmons and Linda Johnson

Short videos and sample assignments will be used to prompt a discussion of how our expanding knowledge of brain science can be used to help our students learn.

Strategic Initiatives:

1. *Inspiring Passion through Collaboration*
2. *Focusing on Student Success*
3. *Valuing a Culture of Learning*

**Professional Development Wrap-up Luncheon**

Flex # 752

12:30pm – 1:30pm, Center for Excellence (LB 210)

Please join your Professional Development Leadership Team: Carol Stanley-Hall, Ruth Ann Hansen, Jack Lemley, David Danielson, and Magian Smith to wrap up the 2012 Flex Week.

Strategic Initiative:

1. *Inspiring Passion through Collaboration*



Faculty Flex Calendar Basics Spring 2012

The January 2012 Flex Workshops “Calendar At A Glance” was distributed to all employees December 2011. The Flex Booklet, which includes workshop descriptions and professional development program information, in addition to distributed hardcopies, is available on-line in two locations.

- Butte College Home page
Departments/Programs/Services
Professional Development
- MyBC
Groups and Committees
Professional Development – Faculty

The purpose of the college’s Flexible Calendar

The Community College Flexible Calendar Program allows a college to use up to 15 classroom days (out of the mandated 175) for faculty participation in developmental activities related to “staff, student and instructional improvement” (Title 5, section 55720). The Flexible Calendar Program is a component of the college’s overall Professional Development overall program for faculty and staff.

Butte’s 11 Flex Days

Butte College has agreed to take eleven days of the state-mandated 175 instructional days, as Flexible Calendar Days. Six (6) in fall and five (5) in the spring. The state average for flexible calendar days is six. Butte College :

- 164 instructional days + 11 days flex = 175 Days.
- 6 hours = 1 Flex day - Determined by the Board
- 11 X 6 = 66 hour Flex Obligation

Institute Days (2) and Flex days (11)

Two days, Institute Day Fall & Spring, bring the total to the 177 day Butte College faculty contract. Full -time faculty have a contractual obligation to attend Institute Day.

Flex Calendar Record Keeping

Sign-in on Flex Workshop Attendance Forms:

The college is required to accurately track and account for those flex hours for which we are paid in lieu of instructional time.

Full-time Faculty: Full-time faculty’s hours are tracked and recorded by the Professional Development Office. Sixty-six hours (66) for the academic year. Your name and signature on the workshop attendance sheets, verifies your participation.

A summary of individual full-time faculty Flex hours will be mailed inner campus several times each semester. Please make corrections and updates at that time and return to the Professional Development Office.

At the end of the academic year, a report of all full-time faculty flex hours is submitted to the Vice President for Learning and Economic Development.

Associate Faculty: Associate faculty’s flex opportunity/obligation is determined by each semester’s instructional contract. The Mandatory Meeting and Flex Payment Form, accessible on line, <http://www.butte.edu/prodev/forms/> is used to report your flex activities. This form is signed off by your department chair/coordinator and routed to payroll for flex payment. Remember, you can only be paid for the number of flex hours indicated on your contract. It is allowable to complete fall 2011 flex hours during the spring semester 2012 if you are contracted for that semester as well. However, it is not allowable to carry over flex hours between academic years.

Professional Development Flex Opportunities

To fulfill the flex obligation, faculty may use a combination of activities such as:

- August/January Flex Week Workshops
- Semester Flex Workshop
- Partnerships
- Travel & Conference
- Learning Group Activities
- Department Planned Projects and Activities
- Individual Activity Contracts.
- Academic Course Work
- Other workshops as planned by the flex committee.

Forms, applications and additional information for these programs are available on-line at the Professional Development web site. <http://www.butte.edu/prodev/> Forms and applications.

-August/January Flex Workshops Pre-approved

Flex credit activities described in the January 2012 Flex Booklet, all have assigned flex numbers. These workshops have all been reviewed by the Faculty Flex Committee to ensure compliance with the Title 5 Flex Calendar Program Guidelines. The Professional Development Office will keep records of attendance at these flex workshops.



-Individual Activity Contracts (IAC)

Pre-approval required:

- Full-time Faculty – Deans & Directors
Up to 50% of Flex Obligation
- Associate Faculty – Chairs & Coordinators
Up to 75% of Flex Opportunity

Flexibility and choice in determining what is best for your own professional development and growth is supported and encouraged. Faculty may choose to do individual projects for a portion of the overall flex obligation. However, Title 5 language and Butte College Policy, do not allow an IAC's to fulfill 100% of your flex obligation. For full-time faculty, up to 50% of your obligation may be in the form of IACs. (Deans & Directors may make exceptions up to 75%).

For associate faculty, up to 75% of the flex opportunity is allowable in the form of an IAC. Completed IACs are to be submitted to the Professional Development Office (CFE) within 10 days of completion.

Guidelines are included on the Individual Activity Contract (IAC) form. If you are not sure your project qualifies under the guidelines, full-time faculty - ask your dean/director; associate faculty – ask your chair/coordinator or call the Professional Development coordinator before you begin on your IAC.

-The Partnership Program

Partnerships offer faculty the opportunity to share ideas on classroom teaching, to improve skills, enhance knowledge, explore issues, and increase collegiality.

Faculty may participate in any number of partnerships per academic year, but not with the same individual. The partnership program allows faculty to receive from a minimum of three up to ten hours flex credit per partnership.

Associate faculty have an opportunity once each semester to earn a stipend for a partnership.

Step One - Form the Partnership

“Forming the Partnership” establishes the partnership for each person. Each partner needs to complete this form. Deliver to the Professional Development office at the beginning of the partnership.

Step Two - Track the Partnership

“Tracking the Partnership”, keeps an ongoing record of the meeting dates, time spent, and the content and value of the discussions. Each partner needs to complete and sign this form. Deliver this completed and signed form to the Professional Development office at the end of the partnership.

-Learning Group Program

Four to twelve faculty (full and/or associate) may form a learning group. Learning groups offer faculty the opportunity to collaboratively pursue an activity that leads to the improvement of the institution. The activity should lead to one or more of the following: 1) staff improvement 2) student improvement and/or 3) instructional improvement.

- Faculty may participate in two leaning groups per academic year.
- Faculty participants determine the number of flex hours required for the group's activity. (Up to 49.5 hours per year total whether one or two learning groups). These hours will be earned through reading, group discussion, and other activities the group may determine are worthwhile.
- Pre-approval required by the Faculty Professional Development Coordinator.

Step 1: Form the Learning Group

This step names the group members and establishes the texts or materials needed for the group's activities. Initially, a Members and Project Plan Form (check Pro Dev web site for forms) must be completed and submitted to the Professional Development Faculty Coordinator for approval. At the completion of the group's activities, each member must fill out an individual participation form.

Step 2: Track the Learning Group

The second step tracks the learning group throughout its duration. This step provides an accounting to the Chancellor's Office for flex hours. Those hours will be awarded at the close of the group's activities.

- The learning groups are expected to meet together at the same time to fulfill the requirements of the program.
- The number and duration of the discussion sessions will be set by the group.
- A record of these meetings must be kept by each group member.
- Each group member will submit the “Tracking the Learning Group Form” to Professional Development at the conclusion of the group.

Flex FAQs

Is Institute Day mandatory?

Institute Day, beginning at 2:00 p.m. is mandated by the District for full-time teaching faculty. Institute Day participation does not count toward the 66 hour flex



obligation for full-time faculty. Associate faculty are invited and encouraged to attend the President's Address and the Institute Day Presentation held in ARTS 160 (Black Box Theatre). Associate faculty will receive flex credit for their attendance.

What is my Professional development obligation?

The full-time faculty obligation is 66 hours for this academic year, July 1 to June 30. If you are teaching an overload class, you will have an additional Flex opportunity. Associate faculty Flex hours are based on load and determined by the Office for Student Learning and Economic Development.

What if I have reassigned time?

Flex hour requirements are reduced for full-time teaching faculty who have reassigned time outside of the classroom. For example: a coordinator with 25% reassigned time is responsible for 75% of the Flex hours (50 hours of Flex); a chair with 50% reassigned time would need to complete 33 Flex hours.

When can I fulfill my Flex Calendar obligation?

The Flex calendar year runs from July 1 through June 30. You may not participate (count hours for flex) at times you are scheduled to teach or hold office hours. Other than those two restrictions, you may participate in Flex activities, workshops, and individual activity contracts at any time during the day or evening.

Are Flex Calendar hours required of all employees?

Classified employees, non-classroom faculty members, and members of the management unit have no Flex Calendar requirements. However, all are welcomed and encouraged to attend workshops.

Do mandatory State and insurance carrier workshops count towards Flex hours?

Yes. Professional Development and Human Resources work together to coordinate the schedule of mandatory workshops required by the State of California, BC Board Policy, and our insurance carrier. These mandatory workshops are eligible for Flex credit hours.

How do I learn about activities for Flex?

The schedule of workshops "Calendar At A Glance" will be provided in hard copy to all employees. In an effort to be sustainable, the Flex Booklet with workshops descriptions and Professional Development program information, will be available on-line at two web sites

- MyBC at the Professional Development - Faculty site under Groups & Committees
- Butte College Home page Professional Development - under the drop down menu for Departments/Programs/Services

What if I plan to do an activity that's not scheduled? Can I create my own project?

If you are planning to do an individual activity, details for this contract—which require pre-approval—are clarified in this Flex Calendar Basic document.

Who can offer workshop?

Professional Development welcomes new ideas for workshops and encourages faculty and staff to share their expertise. Contact, Carol Stanley Hall, the Faculty Professional Development Coordinator 895-2543 or email stanleyhallca@butte.edu.

Can Flex hours carry over from one academic year to the next?

No. Neither full or associate faculty may carry over flex hours from one academic year to the next. Associate faculty may carry over flex hours from fall to spring as well as apply spring hours back to the fall if needed.

Are department meetings eligible for Flex credit?

Full-time faculty are required to participate in day-to-day management of their department.

- Regularly scheduled department meetings, usually monthly, are not appropriate for Flex credit.
- Extra meetings involving SLO's; Program Review; Curriculum Review; guest speakers may count for flex. Please work with the department chair for the department flex #.

Besides Institute Days, which scheduled Flex activities are required for full-time faculty?

Department meetings, the Academic Senate forum, held on the last Tuesday before the beginning of instruction, are considered required for full-time faculty. Some departments schedule their meetings at other times.

How are all these decisions made?

California Code of Regulations Title 5, specifies criteria to participate in the Flexible Calendar Program. Actual number of flex days and the specific days are negotiated by the BCEA and the Board of Trustees. Faculty policies for Professional Development have been recommended by the Faculty Flex Committee and approved by the Academic Senate and supported by the administration.

Do You Have Ideas?

Contact Carol Stanley-Hall at the Professional Development office with your suggestions and ideas for Spring 2012 workshops. Carol can be reached at the Professional Development office or E-mail her at stanleyhallca@butte.edu. Phone is 530-895-2543

